

TN-41

PCB 240 Series Industrial Strain Sensors

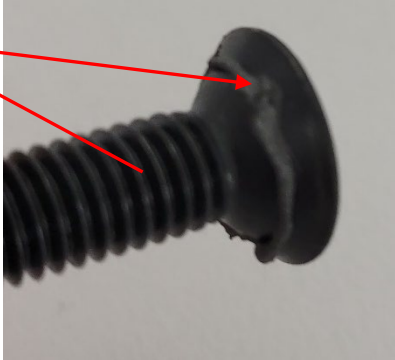
Technical Note

PCB 240 Series Industrial Strain Sensors

The PCB 240 Series Strain Sensors are supplied with a M6 X 1-6G x 22 mm flat head screw for installation and preloading. Variability in machine screw manufacturers today necessitates the use of an assembly lubricant on the screw head and threads to ensure that 10 Nm of torque produces sufficient clamp load between the sensor and mounting surface. Reference below figure on locations where to apply.

PCB has tested use of silicone grease and anti-seize and recommends use of anti-seize for best results which is available from PCB, see part number 080A82 (ASSEMBLY LUBRICANT LOCTITE LB 8150). Test results when an assembly lubricant is not utilized indicate sensor performance may be degraded (Non-Linearity & sensitivity).

Locations to Apply
PCB 080A82



If you have any questions, please contact PCB at (716) 684-0002.



3425 Walden Avenue, Depew, NY 14043 USA

pcb.com | info@pcb.com | 800 828 8840 | +1 716 684 0001

© 2023 PCB Piezotronics - all rights reserved. PCB Piezotronics is a wholly-owned subsidiary of Amphenol Corporation. Endevo is an assumed name of PCB Piezotronics of North Carolina, Inc., which is a wholly-owned subsidiary of PCB Piezotronics, Inc. Accumetrics, Inc. and The Modal Shop, Inc. are wholly-owned subsidiaries of PCB Piezotronics, Inc. IMI Sensors and Larson Davis are Divisions of PCB Piezotronics, Inc. Except for any third party marks for which attribution is provided herein, the company names and product names used in this document may be the registered trademarks or unregistered trademarks of PCB Piezotronics, Inc., PCB Piezotronics of North Carolina, Inc. (d/b/a Endevo), The Modal Shop, Inc. or Accumetrics, Inc. Detailed trademark ownership information is available at www.pcb.com/trademarkownership.