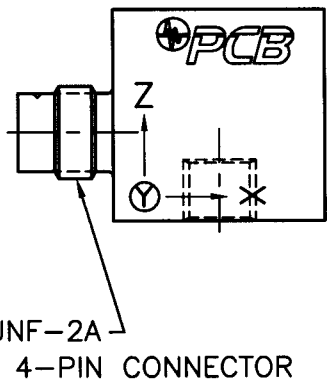
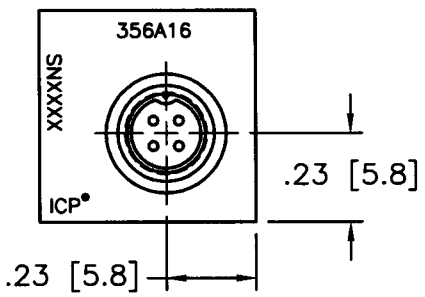
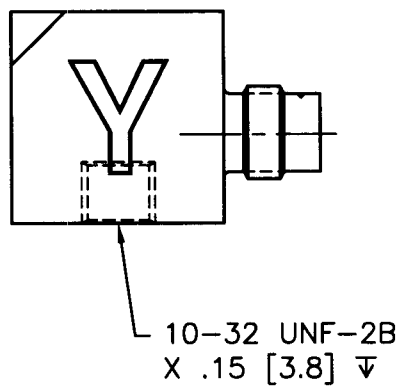
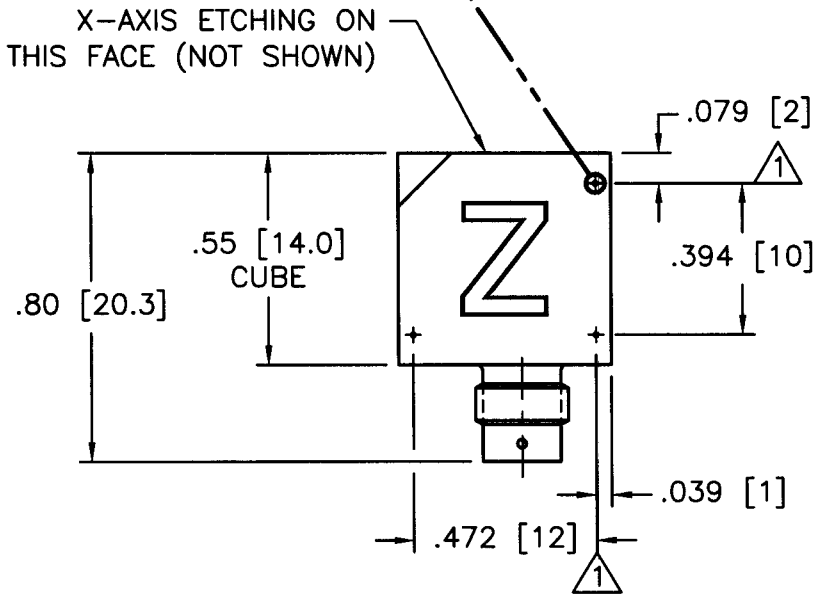
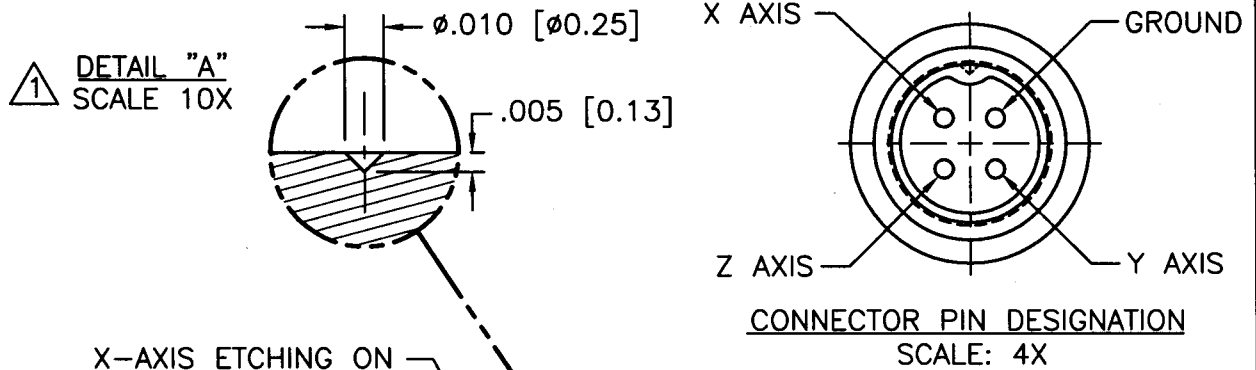


10323

PCB Piezotronics Inc. claims proprietary rights in the information disclosed hereon. Neither it nor any reproduction thereof will be disclosed to others without written consent of PCB Piezotronics Inc.

APPLICATION		
NEXT ASS'Y	USED ON	VAR

REVISIONS				
REV	DESCRIPTION	ECN	DATE	APP'D
A	UPDATED DESIGN	10324	3/22/99	
B	UPDATED ETCHING	10441	5/6/99	
C	ADDED TEDS OPTION	20286	7/26/04	<i>DM7/04</i>



△ TEDS OPTIONS ONLY

UNLESS SPECIFIED TOLERANCES	
DIMENSIONS IN INCHES	DIMENSIONS IN MILLIMETERS [IN BRACKETS]
DECIMALS XX ±.01	DECIMALS X ±0.3
XXX ±.005	XX ±0.13
ANGLES ±2 DEGREES	ANGLES ±2 DEGREES
FILLETS AND RADII .003 - .005	FILLETS AND RADII [0.07 - 0.13]
DD011 REV. C 01/21/03	

DRAWN	<i>SM</i>	<i>7/27/04</i>	MFG	<i>OK</i>	<i>7/27/04</i>
CHK'D	<i>SM</i>	<i>7/27/04</i>	ENGR	<i>M3</i>	<i>7/27/04</i>
APP'D	<i>Photo</i>	<i>7/28/04</i>	SALES	<i>CS</i>	<i>7/28/04</i>
TITLE	OUTLINE DRAWING MODEL 356A16 TRIAxIAL ACCELEROMETER				

PCB PIEZOTRONICS
3425 WALDEN AVE. DEPEW, NY 14043
(716) 684-0001 EMAIL: SALES@PCB.COM

CODE IDENT. NO. 52681

DWG. NO. 10323

SCALE: 2X SHEET 1 OF 1